



**BARTLETT
TREE EXPERTS**

SCIENTIFIC TREE CARE SINCE 1907

**Eric Schmidhausler
Nick Turco**

WHEN TO CALL AN ARBORIST - Definition

Merriam-Webster SINCE 1828

JOIN MWU | GAMES | BROWSE THESAURUS | WORD OF THE DAY | VIDEO | WORDS AT PLAY

arborist

DICTIONARY | THESAURUS

f
t
g+

arborist
noun | ar·bor·ist | \ˈär-bə-rɪst\

arborist

[ahr-ber-ist]

Spell Syllables

Word Origin

noun

1. a specialist in the cultivation and care of trees and shrubs, including tree surgery, the diagnosis, treatment, and prevention of tree diseases, and the control of pests.

Origin of arborist

1570-1580

First recorded in 1570-80; arbor³⁺ -ist

Definition of ARBORIST

: a specialist in the care and maintenance of trees

NEW! Time Traveler

First Known Use: 1755

THE SAME YEAR >

★

CITE

A>あ

f

t

g+

5 “Must do” tree care tips

- ▶ Fertilization
- ▶ Root Collar Issues
- ▶ Tree Structure
- ▶ Pest Management
- ▶ Annual Property Visits



Fertilization

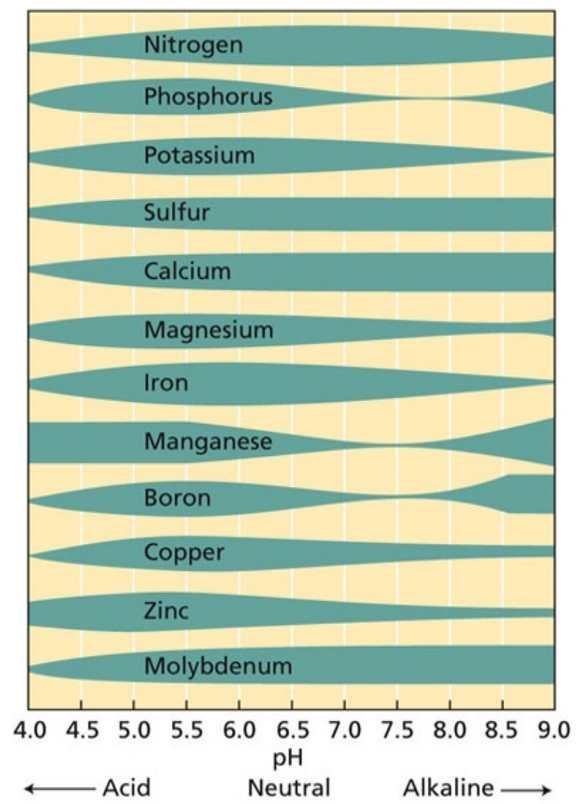
- ▶ Landscape trees are lacking vital nutrients due to poor soils on properties
- ▶ Goal is through our fertilization program to imitate nature as closely as possible through amendments. Slow release Nitrogen.
- ▶ Soil samples are critical for properties to understand “snapshot” of property
- ▶ Healthy trees compartmentalize decay better, “heal” quicker
- ▶ Fertilization helps promote root growth



Nutrient Deficiencies



Soil Analysis



Root Collar Issues

- ▶ Main types: Container, Balled and Burlapped, Bare root
- ▶ “Cultural problems” of not preparing root ball when planted
- ▶ Planting too deep/overmulching
- ▶ Girdling roots
- ▶ Planting materials (wire/straps) left on



Proper planting

Plant Your Tree Properly

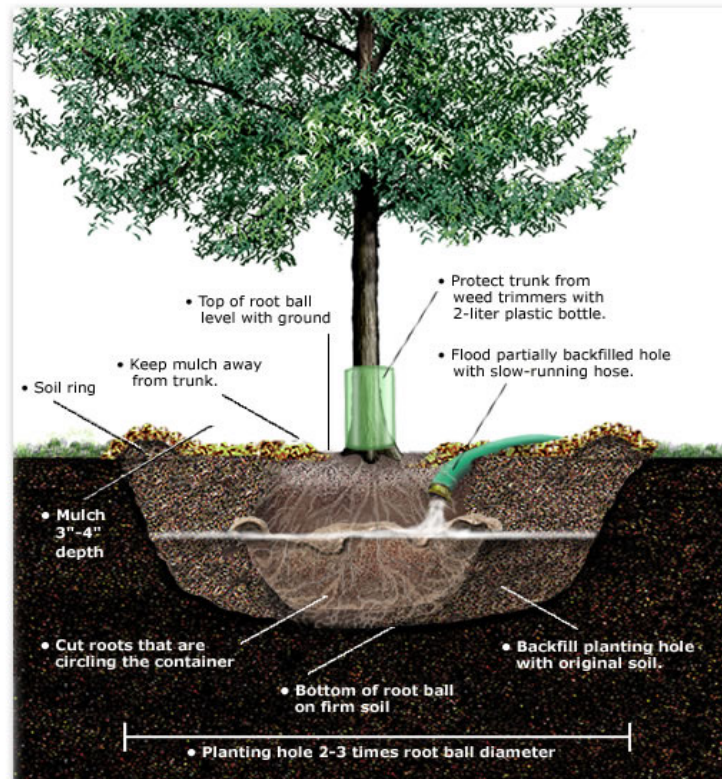


Illustration Copyright © Robert O'Brien

Container, Balled and Burlapped, Open root



Girdling Roots



Over mulching

Mulch Volcano - BAD



Proper Mulching



Note visible 'flare'
at base of trunk.



Tree Structure

- ▶ Young tree pruning is critical for overall structural integrity success
- ▶ Ounce of Prevention is Worth a Pound of Cure: BE PROACTIVE
- ▶ Subordination of co-dominant leads, thinning out rubbing and conflicted limbs
- ▶ Weight reduction on tip ends of larger trees to reduce stress on branch unions

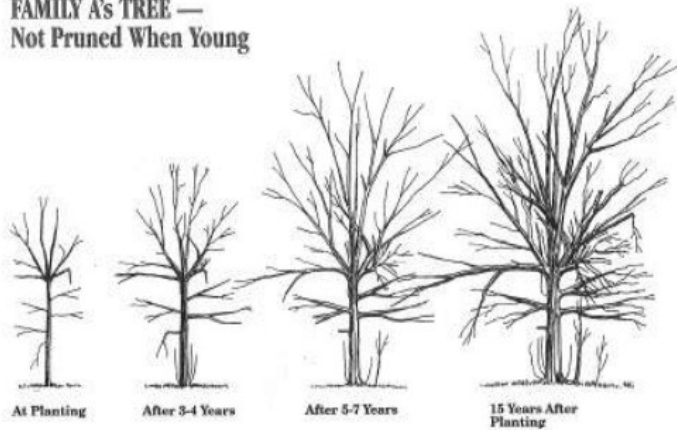


Importance of Training Young Trees



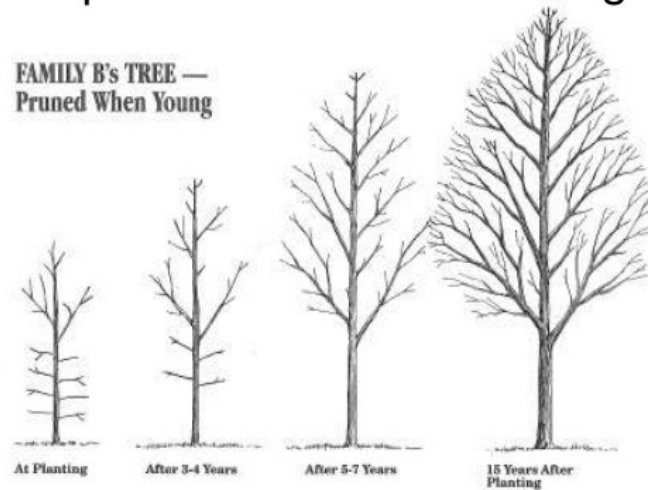
No Structural Pruning

**FAMILY A's TREE —
Not Pruned When Young**



Repeated Structural Pruning

**FAMILY B's TREE —
Pruned When Young**



Co-Dominant Stems / Branches



Pest Management

- ▶ Secondary “stressors” most of the time
- ▶ Pests and disease usually stem from an unhealthy tree
- ▶ Pests are usually easier to control than diseases
- ▶ Most common pests: Scale Insects/Boring insects
- ▶ EAB in Charlotte



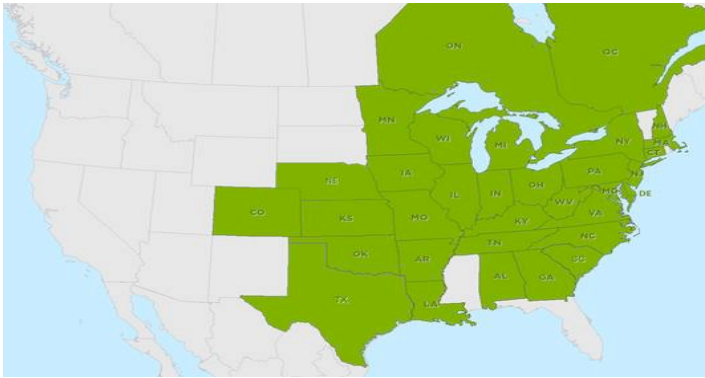
Gloomy Scale



Ambrosia Beetles



Emerald Ash Borer



Annual Inspections

- ▶ Ever changing landscape, no tree stays the same
- ▶ Environmental stressors: Drought, Excess rainfall, Heat, Changing temperatures
- ▶ Site activity: Construction, drainage, new landscaping, changes on neighboring properties



Proper Inspection of Trees and Shrubs



WHEN TO CALL AN ARBORIST

1. Six Tree Warning Signs You Should Know
 1. Dead or Broken Branches
 2. Leaning Tree



WHEN TO CALL AN ARBORIST

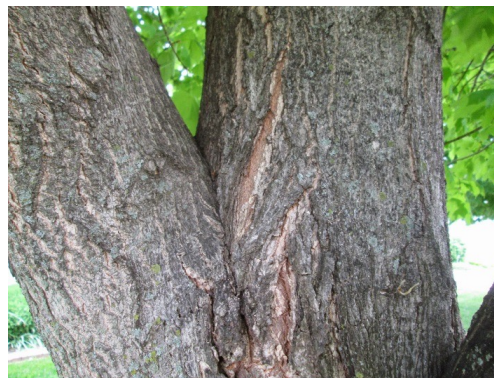
1. Six Tree Warning Signs You Should Know
 1. Dead or Broken Branches
 2. Leaning Tree
 3. Multiple Trunks



WHEN TO CALL AN ARBORIST

1. Six Tree Warning Signs You Should Know

1. Dead or Broken Branches
2. Leaning Tree
3. Multiple Trunks
4. Weak Branch Unions



WHEN TO CALL AN ARBORIST

1. Six Tree Warning Signs You Should Know

1. Dead or Broken Branches
2. Leaning Tree
3. Multiple Trunks
4. Weak Branch Unions
5. Trunk or Branch Cracks



WHEN TO CALL AN ARBORIST

1. Six Tree Warning Signs You Should Know

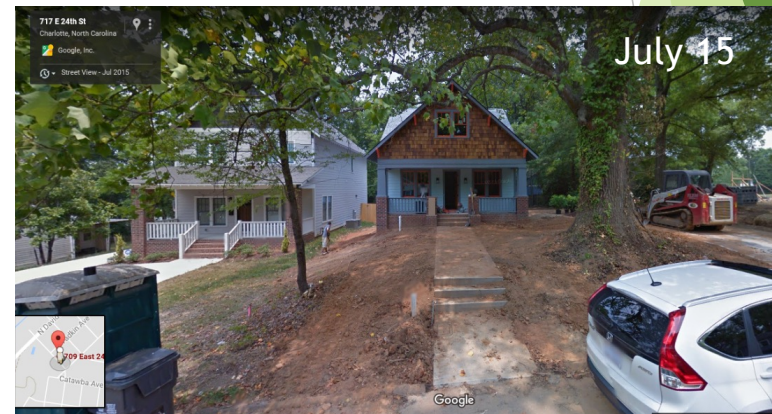
1. Dead or Broken Branches
2. Leaning Tree
3. Multiple Trunks
4. Weak Branch Unions
5. Trunk or Branch Cracks
6. Decayed Wood



WHEN TO CALL AN ARBORIST

1. Health Problems

1. Environmental Damage
2. Construction Damage



WHEN TO CALL AN ARBORIST

1. Health Problems
 1. Environmental Damage
 2. Construction Damage



WHEN TO CALL AN ARBORIST

1. Health Problems

1. Environmental Damage
2. Construction Damage
3. Lightning Damage



WHEN TO CALL AN ARBORIST

1. Preventative

1. Pruning
2. Bracing
3. Cabling





Questions???

Treecare 101: Tree Medic